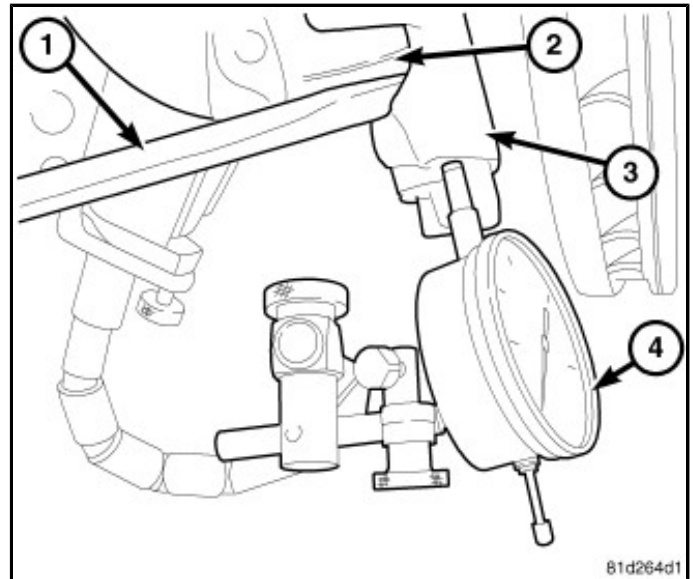


DIAGNOSIS AND TESTING - LOWER BALL JOINT

For proper diagnosis, the lower ball joint wear must be measured with a dial indicator.

The steering knuckle must be pried fully in both directions to accurately measure total ball joint movement.

1. Raise and support the vehicle (Refer to 04 - Vehicle Quick Reference/Hoisting/Standard Procedure).
2. Attach a dial indicator (4) with the indicator resting on the flat part of the steering knuckle (3) by the lower ball stud.
3. Set the dial indicator (4) to zero.
4. Pry between the knuckle (3) and the axle tube yoke (2) next to the lower ball joint using a pry bar (1), record the reading on the dial indicator.
5. If lower ball joint wear is greater than 1.25 mm (0.050 in) then replacement of the lower ball joint is necessary (Refer to 02 - Front Suspension/Front/BALL JOINT, Suspension, Lower/Removal and Installation).

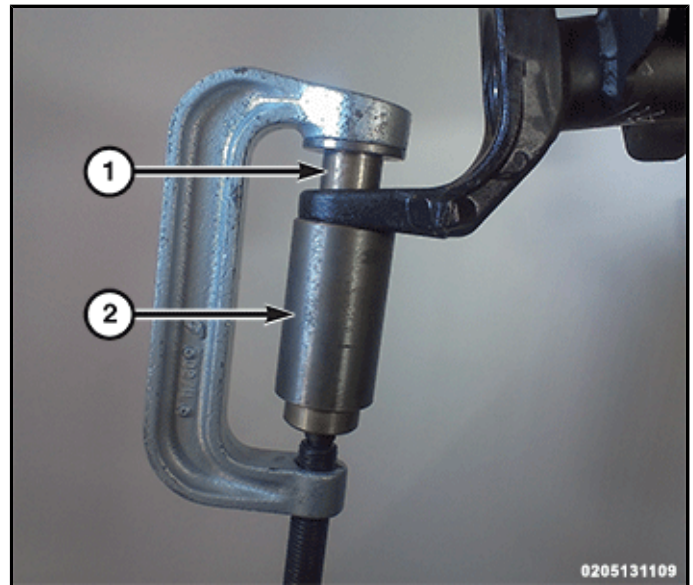


REMOVAL AND INSTALLATION

REMOVAL

CAUTION: If the right front axle shaft is to be removed without removing the Front Axle Disconnect (FAD), the front axle must be placed in the four wheel drive position.

1. Raise and support the vehicle (Refer to 04 - Vehicle Quick Reference/Hoisting/Standard Procedure).
2. Remove the axle shaft (Refer to 03 - Differential and Driveline/Front Axle/SHAFT, Axle/Removal and Installation).
3. Remove the steering knuckle (Refer to 02 - Front Suspension/Front/KNUCKLE, Steering/Removal and Installation).
4. Position [Receiver, Ball Joint Remover 2051000030](#) (2) and [Remover, Ball Joint 2050900030](#) (1) with [C-4212F](#) as shown.
5. Thread the rod into the press until the lower ball joint is pressed fully out.



INSTALLATION

1. Position [Installer, Ball Joint 2051100030](#) (2) and [Receiver, Ball Joint Upper Installation 2051300030](#) (1) with [C-4212F](#) as shown.
2. Thread the rod into the press until the lower ball joint is pressed fully in.
3. Install the steering knuckle (Refer to 02 - Front Suspension/Front/KNUCKLE, Steering/Removal and Installation).
4. Install the axle shaft (Refer to 03 - Differential and Driveline/Front Axle/SHAFT, Axle/Removal and Installation).
5. Install the hub and bearing (Refer to 02 - Front Suspension/Front/HUB AND BEARING/Removal and Installation).
6. Remove the support and lower the vehicle.
7. Perform the wheel alignment procedure (Refer to 02 - Front Suspension/Wheel Alignment - Standard Procedure).

