

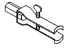




REMOVAL AND INSTALLATION

Special Tools:

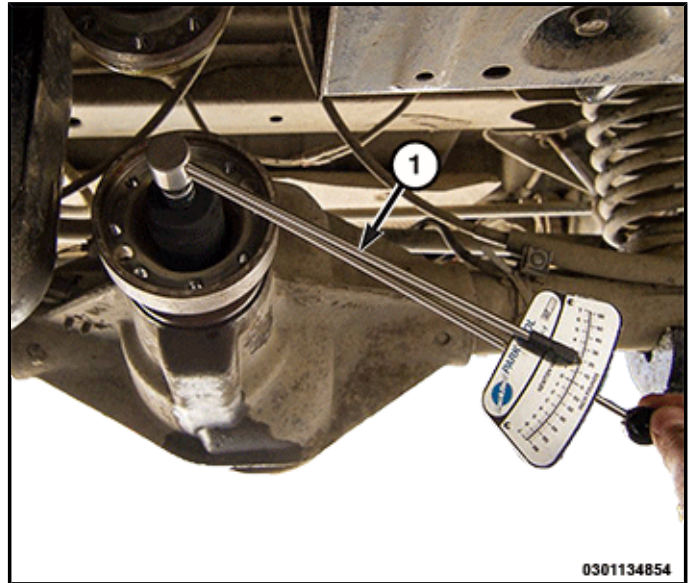
[Click here to launch the form to order any tools you need.](#)

	<p>6958 - Wrench, Spanner Originally Shipped In Kit Number(s) 6947, 6949, 6966, 8204, 8204CC, 8667.</p>
	<p>8992 - Remover, Pinion Flange Originally Shipped In Kit Number(s) 8999, 8999CC, 9299, 9299CC, 9299CC, 9300A-CAN.</p>
	<p>7794-A - Remover, Seal Originally Shipped In Kit Number(s) 6645.</p>
	<p>9684 - Installer, Seal Originally Shipped In Kit Number(s) 9656.</p>
	<p>C-4171 - Driver Handle, Universal Originally Shipped In Kit Number(s) 9202, 9202A-CAN, 9202CC, 9299, 9299CC, 9299CC, 9300A-CAN.</p>
	<p>2054200030 - Installer, Pinion Flange</p>

REMOVAL

1. Raise and support the vehicle (Refer to 04 - Vehicle Quick Reference/Hoisting/Standard Procedure).
2. Remove the rear brake calipers and rotors (Refer to 05 - Brakes, Base/Hydraulic/Mechanical/ROTOR, Brake/Removal and Installation).
3. Remove the rear driveshaft at the pinion flange (Refer to 03 - Differential and Driveline/Propeller Shaft/Removal and Installation).
4. Rotate the pinion gear three or four times.

- Record Total Torque To Rotate (TTTR) with an inch pound torque wrench (1).



- Hold the pinion flange (1) with [Wrench, Spanner 6958](#) and remove the pinion nut and washer.

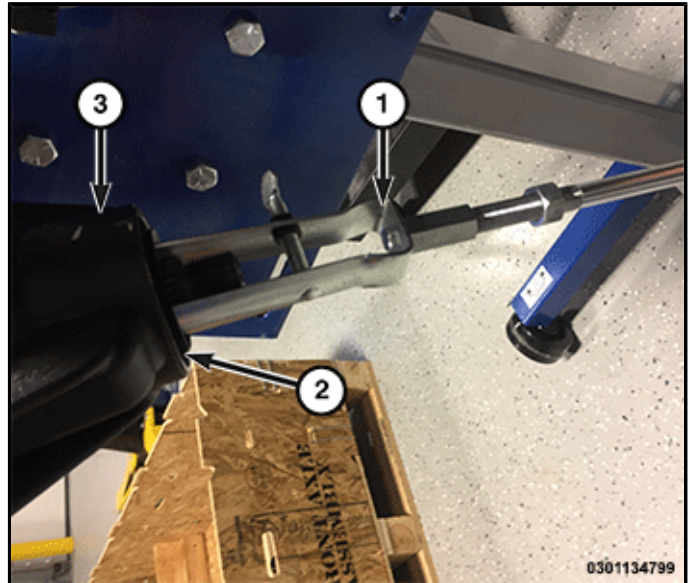
- Mark a line across the pinion shaft and flange for installation reference.



- Remove the pinion flange (1) using the [Remover, Pinion Flange 8992](#) (2).

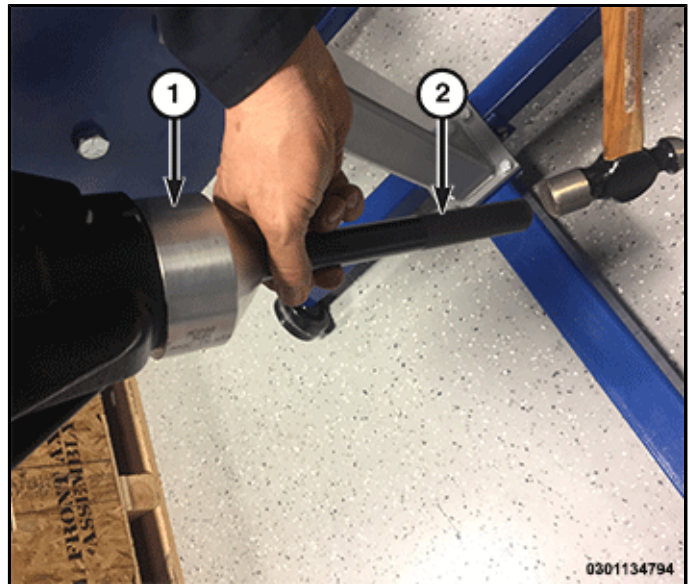


9. Remove and **DISCARD** the pinion seal (2) from the differential case (3) using [Remover, Seal 7794-A](#) (1) and a slide hammer.

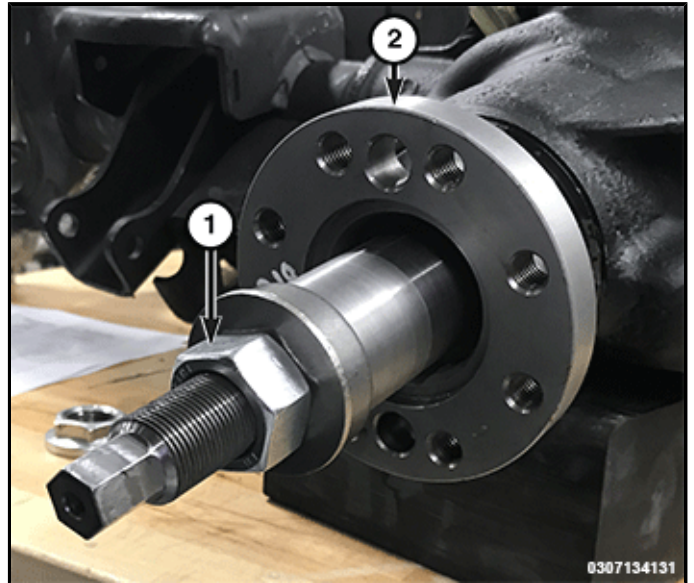


INSTALLATION

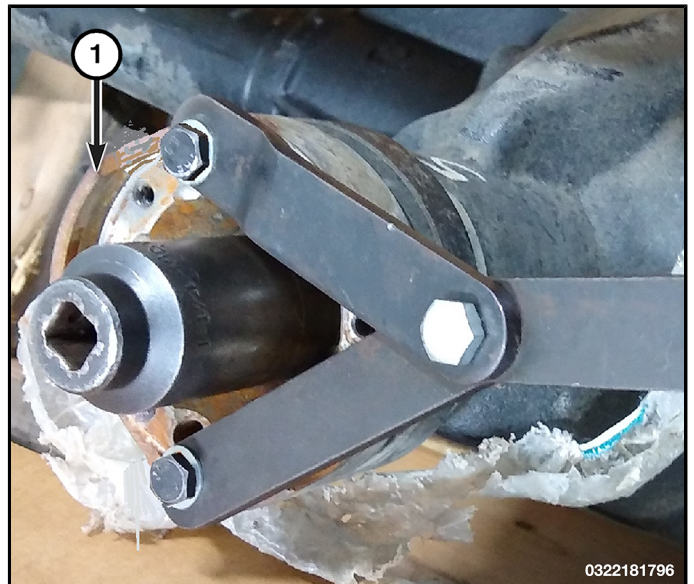
1. Apply a light coating of gear lubricant on the lip of the pinion seal. Install the pinion seal using the [Installer, Seal 9684](#) (1) and [C-4171](#) (2).



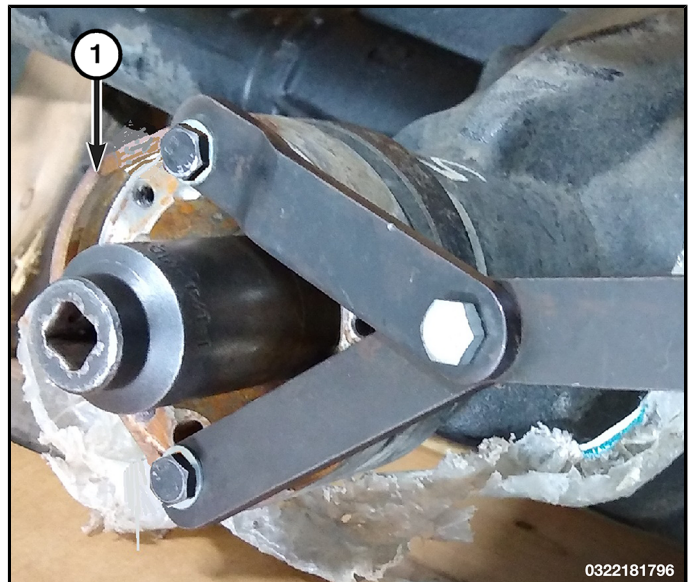
2. Install the pinion flange on the pinion shaft with the reference marks aligned.
3. Install the pinion flange (2) using the [Installer, Pinion Flange 2054200030](#) (1) on the pinion shaft.



4. Hold the pinion flange (1) with [Wrench, Spanner 6958](#) and tighten the [Installer, Pinion Flange 2054200030](#) nut (2). Tighten the nut to remove all end play.



5. Install the pinion washer and a **NEW** nut on the pinion gear.
6. Hold the pinion flange (1) with [Wrench, Spanner 6958](#) and tighten the pinion nut to the proper (Torque Specifications).



7. Measure the Total Torque To Rotate (TTTR) inch pound torque wrench (1). Total torque to rotate is recorded reading plus 0.56 N·m (5 in. lbs.).
8. If TTTR is low, Hold the pinion flange with a suitable tool and tighten the pinion nut in 6.8 N·m (5 ft. lbs.) increments until TTTR is achieved.

NOTE:

If maximum tightening torque of 678 N·m (500 ft. lbs.) is reached before torque to rotate is achieved, the collapsible spacer may have been damaged. Never loosen pinion gear nut to decrease rotating torque and never exceed specified preload torque. Failure to follow these instruction may result in damage.

9. Install the driveshaft (Refer to 03 - Differential and Driveline/Propeller Shaft/Removal and Installation).
10. Install brake components (Refer to 05 - Brakes, Base/Hydraulic/Mechanical/ROTOR, Brake/Removal and Installation).

