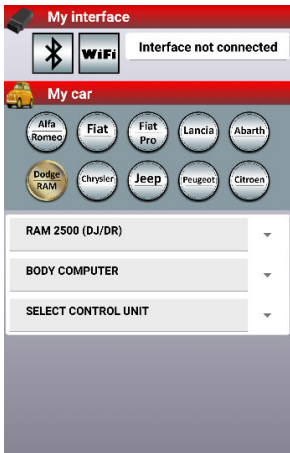


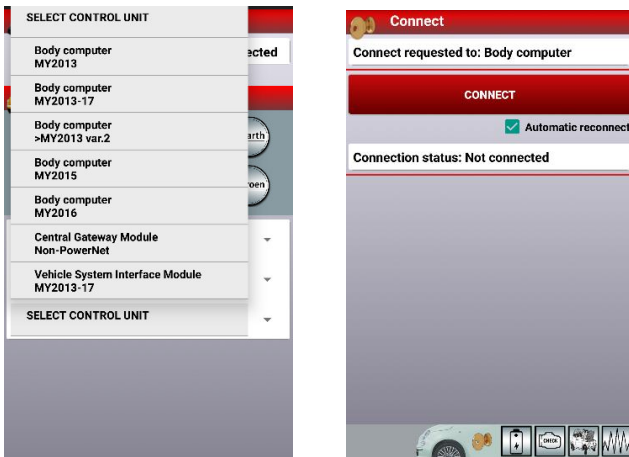
1. Set your make and model

Select: Body Computer



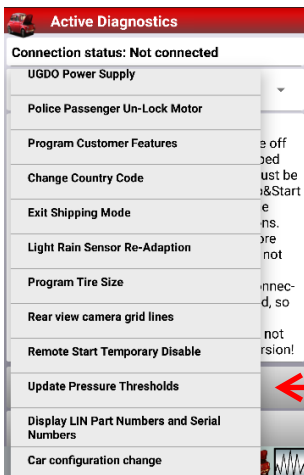
2. Select: Control Unit (Your model year)

“Connect”



3. Go to Active diagnostics

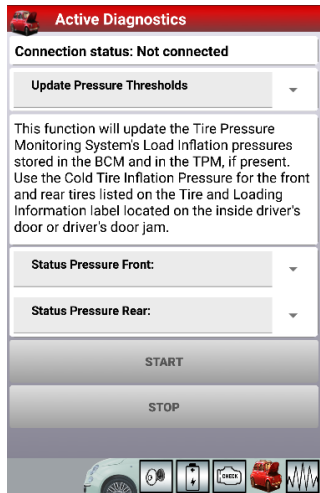
Select: Update Pressure Threshold



4. Select your desired pressures

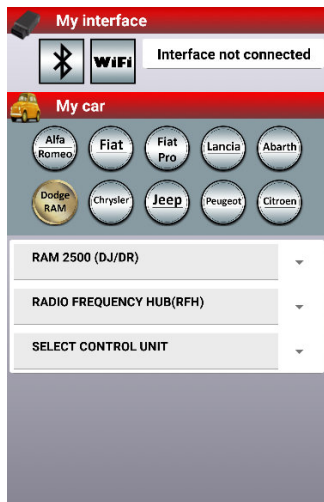
Hit "Start"

Should say Procedure Complete



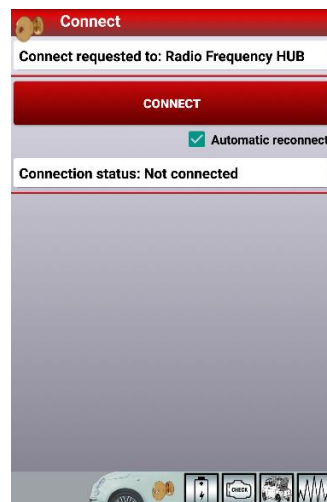
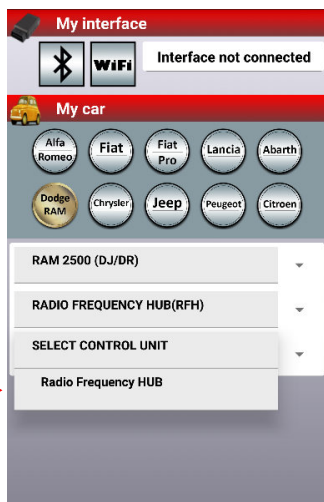
Disconnect from Body Computer

5. Select: Radio Frequency Hub (RFH)



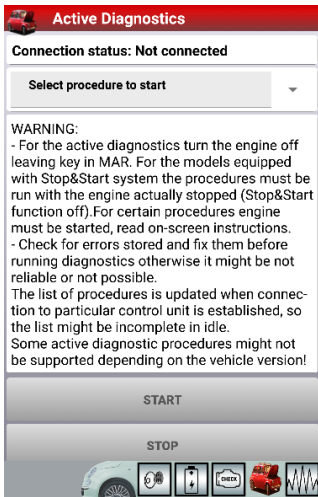
6. Select Control Unit: Radio Frequency Hub

"Connect"



7. Go to Active diagnostics

Make sure to read the instructions on the screens

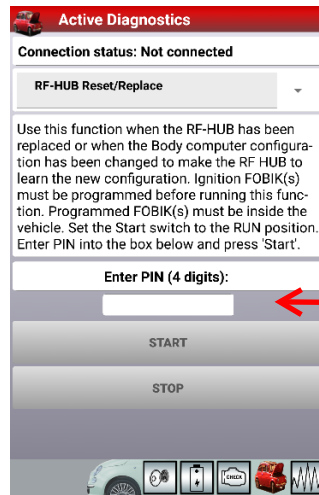


8. Select: RF-HUB Reset/Replace

Read the instructions on the screen

Enter your 4 Digit Pin

Hit "Start"



9. The info should look something like this

Procedure Complete

