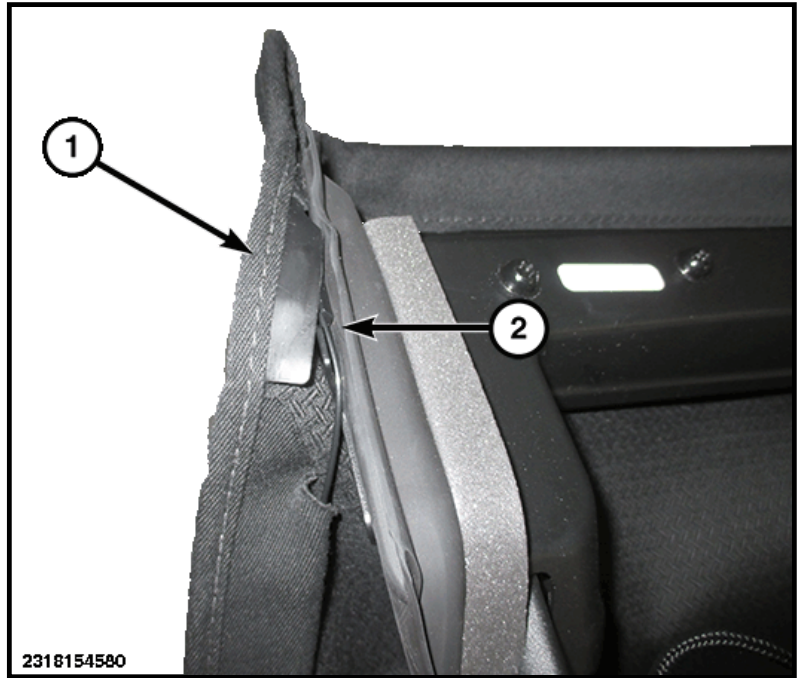


TENSION CABLE

REMOVAL

1. Remove the rear window and rear quarter panels as needed, ([Refer to 23 - Body/Folding Soft Top, 4 Door/Removal and Installation](#)).
2. Release the cover tab from the front seal bracket.



1 - Cover Tab

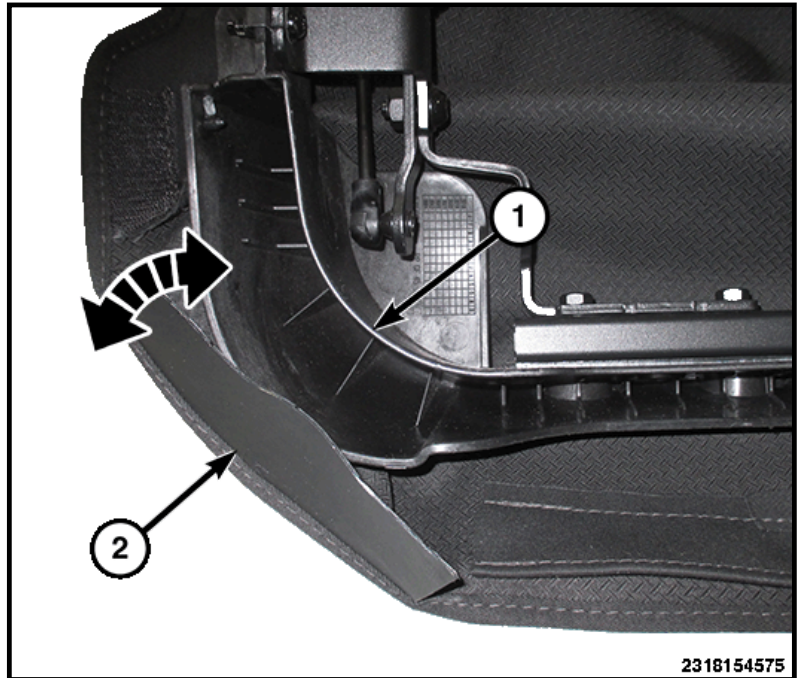
2 - Seal Bracket

3. Disconnect the cable from the seal bracket.



1 - Cable

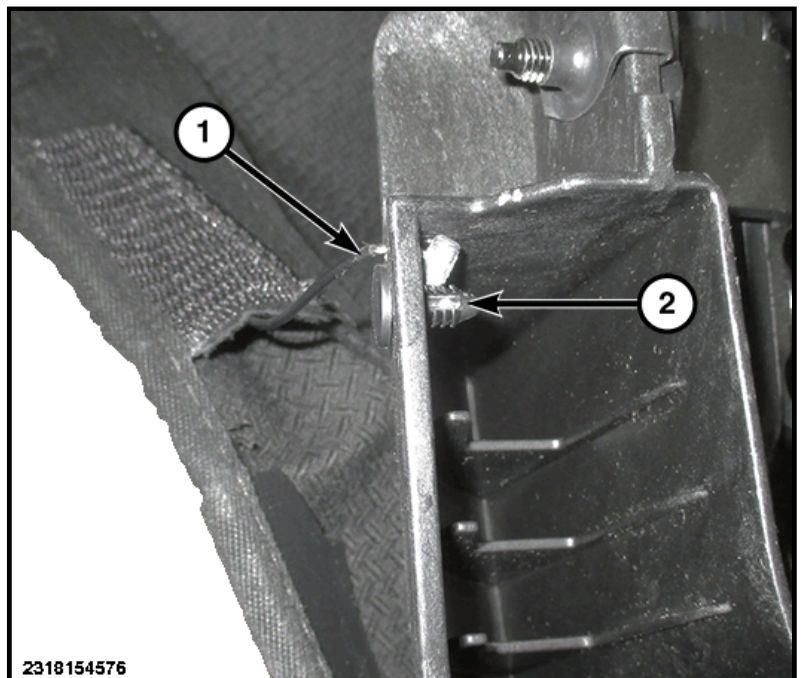
4. Release the cover tabs from the seal bracket.



1 - Seal Bracket

2 - Cover Tab

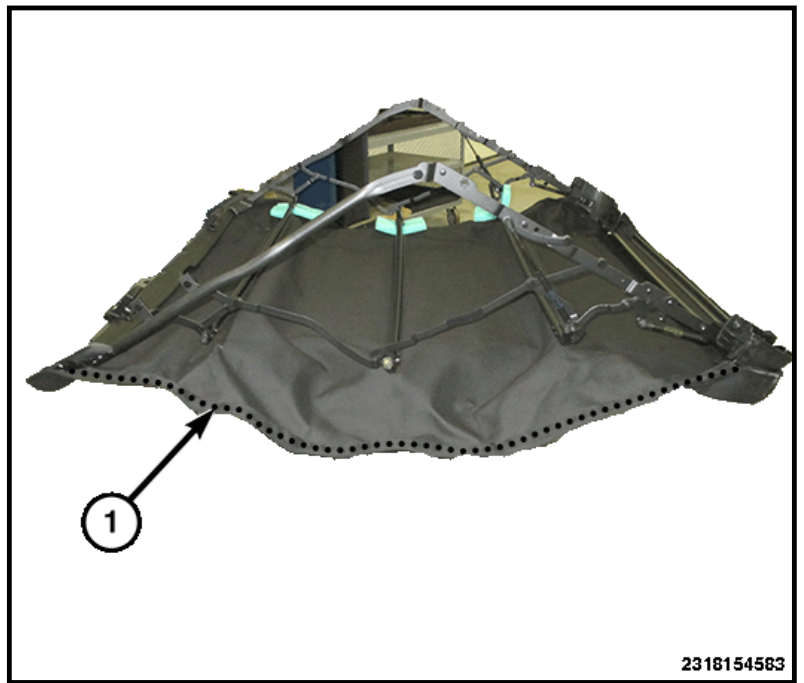
5. Remove the push pin fastener and release the cable from the rear bracket.



1 - Cable

2 - Push Pin Fastener

6. Remove the cable from the pocket sewn into the side of the cover.



1 - Cable

INSTALLATION

Follow the removal procedure in reverse for general reassembly of the components on the vehicle.