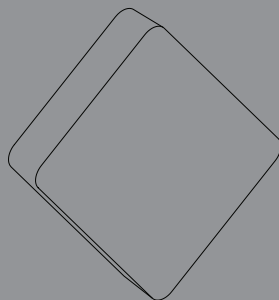




## Quick Installation Guide

### Outdoor Internet Antenna

This document will guide you through the basic installation process for your new D-Link Outdoor Internet Antenna DWP-902



Quick Installation Guide

Documentation also available  
via the D-Link Website

---

## Important Information

---

This product should ONLY be installed by an experienced installer who is familiar with local building and safety codes and, where applicable, is licensed by the appropriate authorities. Failure to employ an experienced installer may render the D-Link product warranty void and may also expose the end user or the service provider to legal and financial liabilities. D-Link and its resellers or distributors expressly disclaim any and all liabilities for injury, damage, or violation of regulations due to the improper installation of outdoor units or antennas.

A safety grounding system is necessary to protect your outdoor installation from lightning strikes and the build-up of static electricity. Direct grounding of an outdoor AP is very important and can help protect your networks from brutal outdoor environments and devastating ESD attacks. The grounding system must comply with electrical codes and safety standards that apply in your country and/or region. Always check with a qualified electrician if you are in doubt as to whether your outdoor installation is properly grounded.

---

## Quick Install Guide

---

This installation guide provides basic instructions for installing the DWP-902 Outdoor Internet Antenna on your network. For additional information about how to use the Access Point, please see the datasheet and user manual from the D-Link support website.

---

## Minimum System Requirements

---

- Computer with Windows, MAC OS, or Linux-based operating system, and an Ethernet adapter installed
- Internet Explorer 7.0, Mozilla Firefox® version 12.0, Safari 4.0, or Chrome 20.0 or newer
- A home router, switch, or Wi-Fi access point

---

## Package Contents

---

- DWP-902 Outdoor Internet Antenna
- Grounding Wire
- Grounding Screw (M4x0.7)
- Quick Installation Guide
- Mounting kit (Pole Mount)
  - Articulation Pole x1
  - T-Form Bracket x1
  - M5x16 Screw x4
  - M6x60 Screw Bolts x2
  - M8x40 Screw bolt x1
  - M8 Nut x1
  - Washer (M8 x 1, M6 x 2, M5 x 4)
  - Spring Washer (M8 x 1, M6 x 2, M5 x4)
  - W-Bar x1
- PoE Injector DPE-301G1
- Power Adapter (54 V/ 0.6 A)<sup>1</sup>
- RJ-45 Ethernet cable
- Warranty Card
- GPL Sheet

If any of the above items are missing, please contact your reseller.

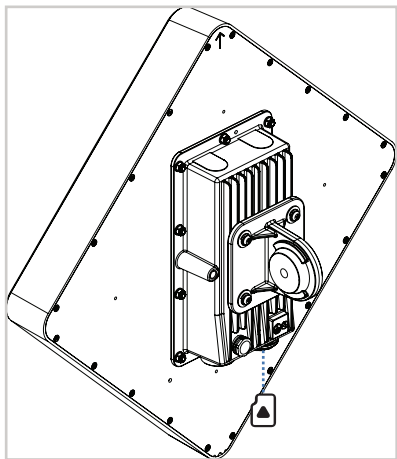
---

<sup>1</sup> Using a power supply with a different voltage rating or PoE injector than the one included with the DWP-902 may cause damage and void the warranty for this product.

---

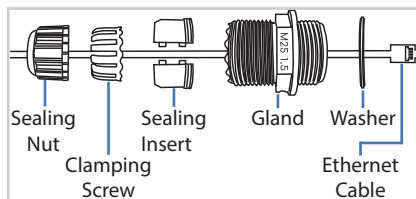
## Physical Installation

### STEP 1: Verify SIM/UICC card.



Verify that your SIM/UICC card has been installed and activated by your carrier.

### STEP 2: Connect an Ethernet Cable to the LAN1 (PoE) Port on the AP.



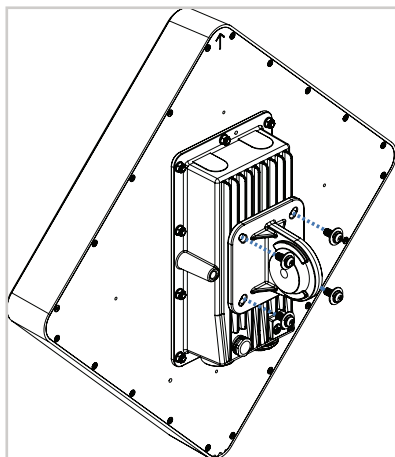
A. Separate the washer, gland, sealing insert, clamping claw, and sealing nut.

B. Thread an Ethernet cable through each in order and then connect the cable to the port.

C. Attach the washer and gland to the case DWP-902, then reassemble the sealing insert, clamping claw, and sealing nut. Tighten until snug.

### STEP 3: Install Articulation Pole on Enclosure

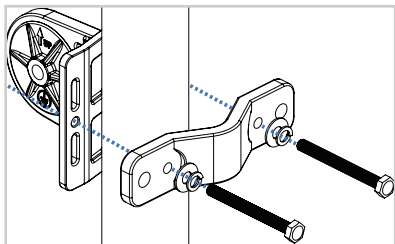
Align the holes on the articulation pole to the back of the device and attach using the M5x16 screws and M5 washers.



## STEP 4: Mount the DWP-902 to a Pole

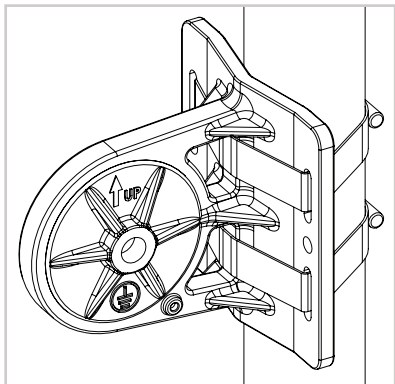
### 4A: Attach the T-form Bracket to a 1.5" to 3" (35mm to 80mm) Pole

Position the T-form bracket on the pole, then align the W-Bar with the threaded holes in the T-form bracket and secure using the included M6 bolts, M6 washers, and M6 spring washers.



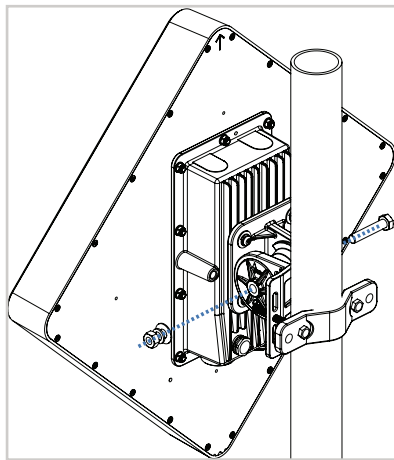
### 4B: Attach the T-form Bracket to a >3" (>80mm) Pole

Loop two hose clamps (not included) through the loops in the T-form bracket, position the bracket on the pole, and then tighten firmly. To adjust the bracket, loosen slightly and slide.



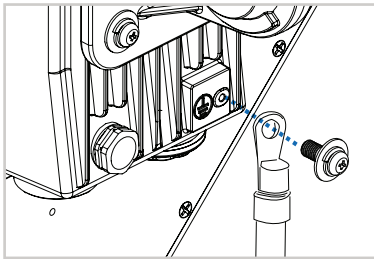
## STEP 5: Attach DWP-902 to the T-form Bracket

Use the included M8x40 Screw Bolt to attach the DWP-902-mounted articulation pole to the T-form bracket. The screw bolt should be aligned with the hexagonal hole. Secure them with the included M8 washer, M8 spring washer, and M8 nut.

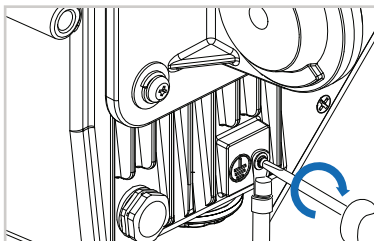


## STEP 6: Connect Grounding Wire

A grounding wire is recommended to help protect your device from lightning strikes and the buildup of static electricity.

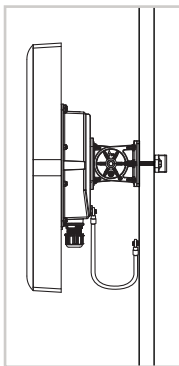


- A. Attach the grounding wire to the DWP-902 using the included M4x0.7 grounding screw.



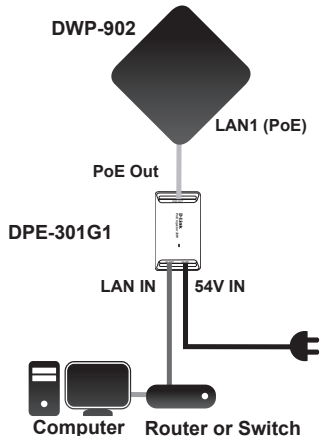
- B. Tighten the grounding wire to the DWP-902 until it is securely attached.

#### Pole Mount



- C. Attach the other end of the grounding wire to the pole mount. Ensure that the pole mount is connected to an electrical ground.

## STEP 7: Connect the DWP-902 to Your Network



- A. Connect the Ethernet cable (connected to the DWP-902 in STEP 1) from the DWP-902 to the "PoE OUT" port on the PoE Injector.
- B. Connect an Ethernet cable from a router/switch or PC to the "DATA IN" port on the PoE Injector.
- C. Attach the power adapter to the connector labeled "POWER IN" on the PoE Injector, and plug it into an electrical outlet.

---

---

## Configuration

---

- A. If you are configuring the AP locally, connect a PC to the PoE Injector “LAN IN” port using an Ethernet cable.
- B. Open a web browser and go to <http://192.168.17.1>. Enter admin as the username and admin as the password to log into the web UI. Once logged in, you can configure the AP via web UI.

**For Product Warranty or Technical Support  
Call U.S. Cellular® Tech Support  
1-888-944-9400**

**D-Link®**



Ver. 1.00(USCC)\_130x183  
2018/05/07