



Client:
Sample ID: Jeep Gladiator Filter Element
Sample #: SUJ4151
Date: October 31, 2024

Total Weight of Solids: 0.55 mg/cm²

As Figure 1 shows: Concentration of each element is:

Carbon: 74.55%
Fluoride: 0.55%
Sodium: 0.31%
Magnesium: 1.31%
Aluminum: 0.15%
Silicon: 0.39%
Phosphorus: 2.07%
Sulphur: 7.01%
Chloride: 5.82%
Calcium: 3.11%
Iron: 1.93%
Copper: 0.73%
Zinc: 2.07%



Client:
Sample ID: Jeep Gladiator Filter Element
Sample #: SUJ4151
Date: October 31, 2024

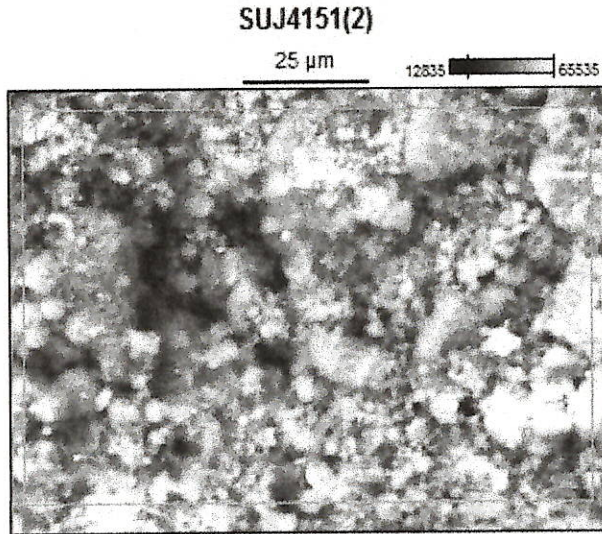
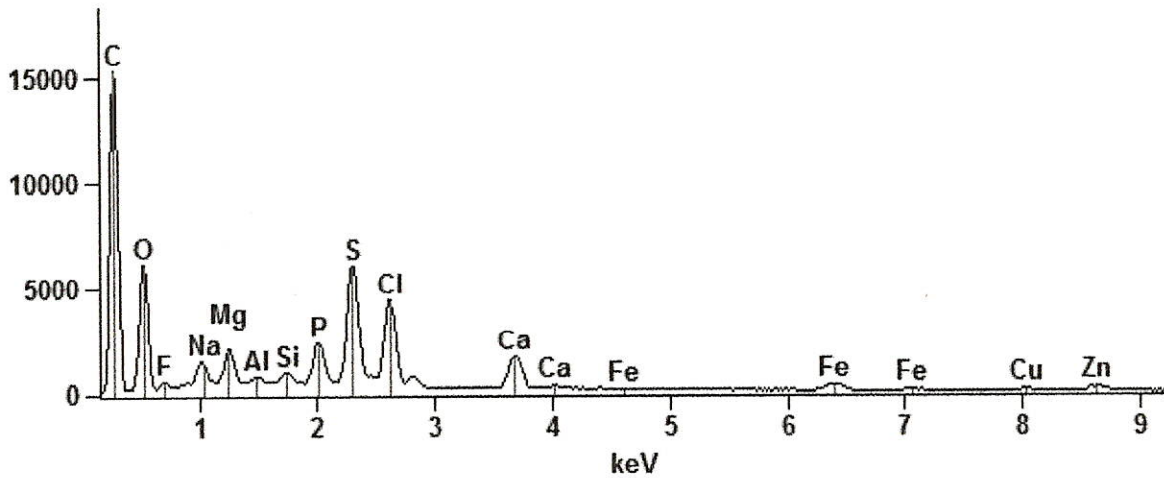


Figure 1

Full scale counts: 15292 SUJ4151(2)_pt1



Weight %

	C-K	F-K	Na-K	Mg-K	Al-K	Si-K	P-K	S-K	Cl-K	Ca-K	Fe-K	Cu-K	Zn-K
SUJ4151(2)_p													
t1	74.55	0.55	0.31	1.31	0.15	0.39	2.07	7.01	5.82	3.11	1.93	0.73	2.07