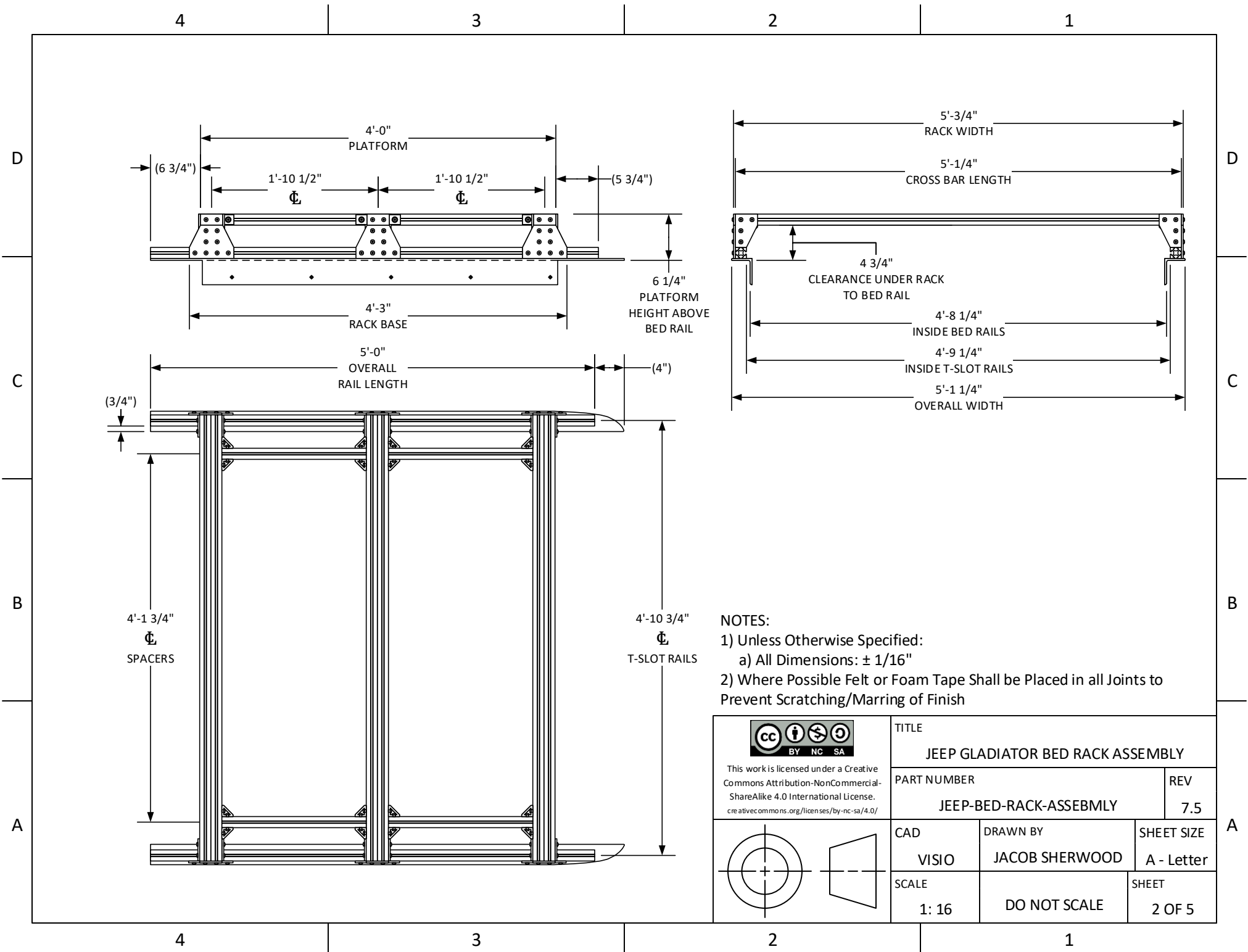


NOTES:

- Critical Dimensions:**
 - Bed Rail Height Above Ground: ~52"^α
 - Overall Cab Height Above Ground: ~72-73"^α
 - Garage Door Opening Height: ~80" To Contact, ~78" Safe Clearance
 - ^α Subject to change Depending on Gross Vehicle Weight
- Apply Foam Tape Seal to All Vehicle Contact Points, to Prevent Vehicle Damage and Water/Dust Leakage.
- All Rack Materials are 6105-T5 Aluminum, Black Anodized^β
 - ^β Exceptions: Bed Rail Angle (Custom Fabricated & Painted)
- All Rack Hardware is 18-8 (A2) Stainless Steel^γ
 - ^γ Exceptions: Jeep Gladiator OEM Trail Rail T-Slot Nuts are Black Oxide Steel

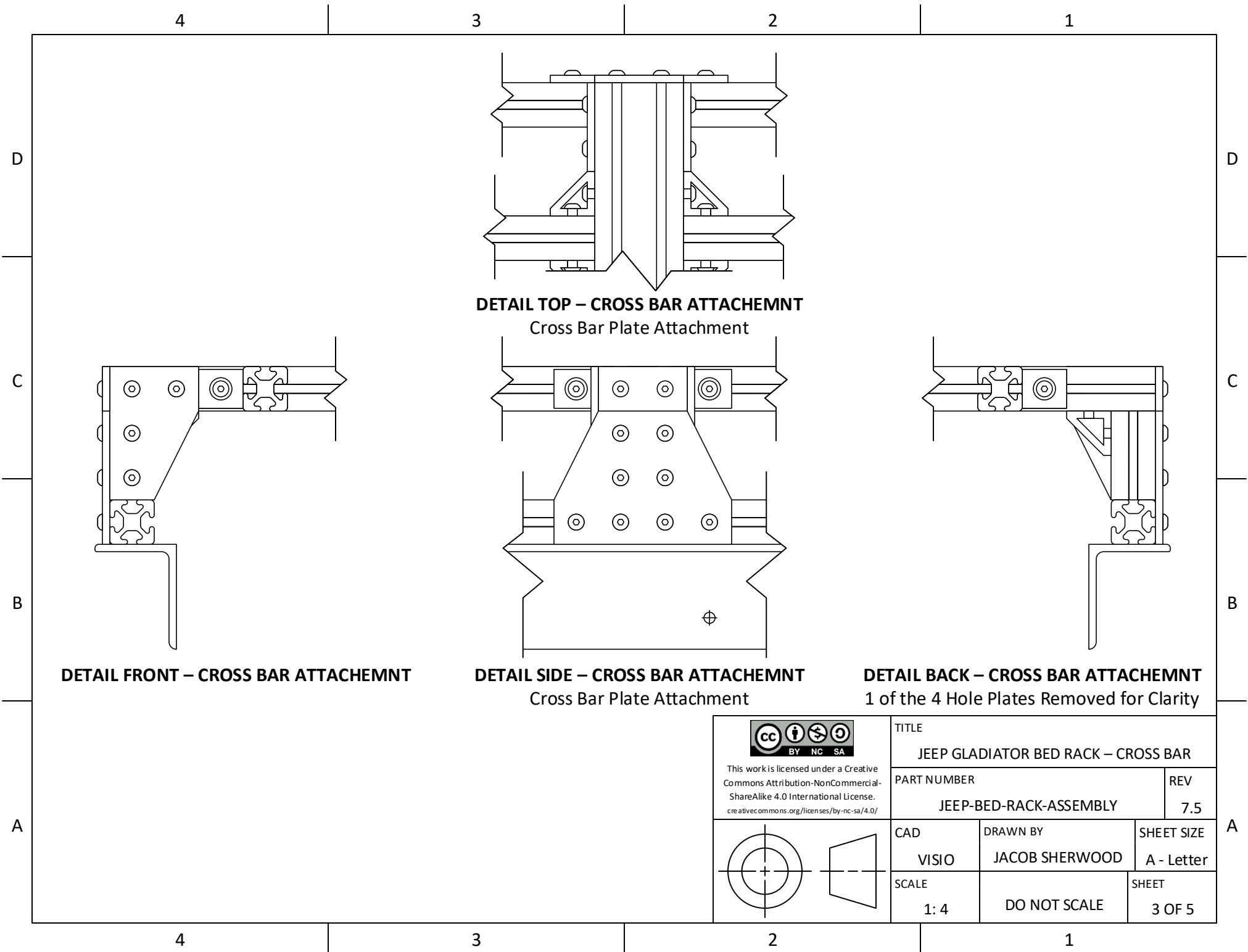
<p>This work is licensed under a Creative Commons Attribution-NonCommercial-ShareAlike 4.0 International License. creativecommons.org/licenses/by-nc-sa/4.0/</p>	TITLE		JEEP GLADIATOR BED RACK - INSTALLED	
	PART NUMBER		REV	
	JEEP-BED-RACK-ASSEMBLY		7.5	
	CAD	DRAWN BY	SHEET SIZE	
VISIO	JACOB SHERWOOD	A - Letter		
SCALE	DO NOT SCALE	SHEET		
1: 16		1 OF 5		



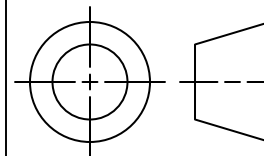
NOTES:

- 1) Unless Otherwise Specified:
 - a) All Dimensions: $\pm 1/16"$
- 2) Where Possible Felt or Foam Tape Shall be Placed in all Joints to Prevent Scratching/Marring of Finish

<p>This work is licensed under a Creative Commons Attribution-NonCommercial-ShareAlike 4.0 International License. creativecommons.org/licenses/by-nc-sa/4.0/</p>	TITLE JEEP GLADIATOR BED RACK ASSEMBLY		
	PART NUMBER JEEP-BED-RACK-ASSEMBLY	REV 7.5	
	CAD VISIO	DRAWN BY JACOB SHERWOOD	SHEET SIZE A - Letter
	SCALE 1: 16	DO NOT SCALE	SHEET 2 OF 5

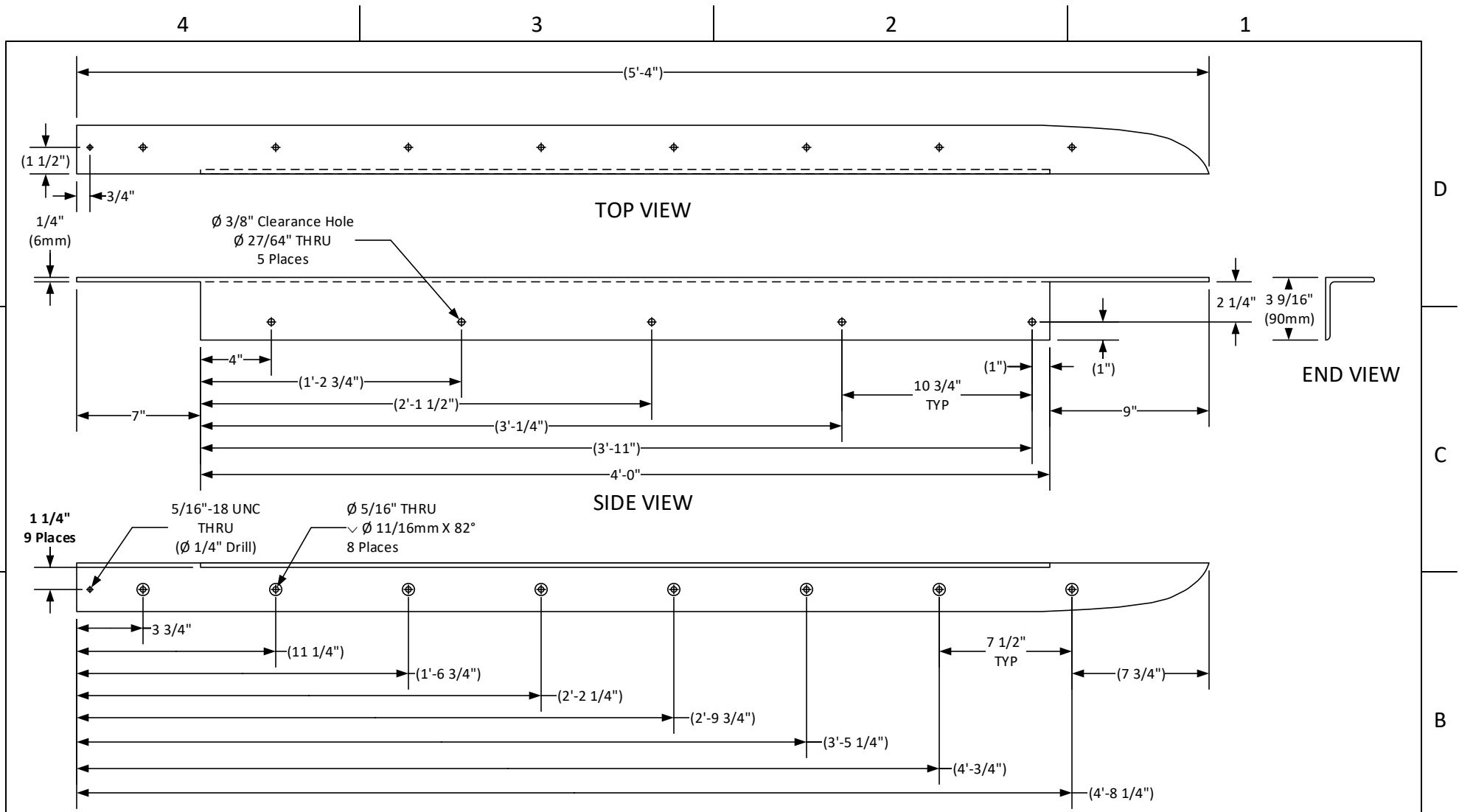


This work is licensed under a Creative Commons Attribution-NonCommercial-ShareAlike 4.0 International License.
creativecommons.org/licenses/by-nc-sa/4.0/



TITLE JEEP GLADIATOR BED RACK – CROSS BAR		
PART NUMBER JEEP-BED-RACK-ASSEMBLY		REV 7.5
CAD VISIO	DRAWN BY JACOB SHERWOOD	SHEET SIZE A - Letter
SCALE 1: 4	DO NOT SCALE	SHEET 3 OF 5

A



NOTES:

- 1) Unless Otherwise Specified All Dimensions: $\pm 1/32"$
- 2) Material: Aluminum, UNS 6105-T5, OR Similar
Recommended Material Stock Size: 90mm x 90mm x 6mm Nominal Extruded Angle, or Similar
- 3) Finish: Prepare All Surfaces with 320 Grit Aluminum Oxide Sandpaper
2 Coats: Rust-Oleum® Stops Rust® Self-Etching Primer Spray Paint, or Similar
2 Coats: Rust-Oleum® Stops Rust® Light Gray Automotive Primer Spray Paint, or Similar
3 Coats: Rust-Oleum® Painter's Touch® Flat Black General Purpose Spray Paint, or Similar
- 4) DETAIL A represent general cross section of entire part
- 5) Part must be free of burrs, sharp edges, and surface imperfections that could affect Fit, Form, Function or Safe Handling.

BOTTOM VIEW

<p>This work is licensed under a Creative Commons Attribution-NonCommercial-ShareAlike 4.0 International License. creativecommons.org/licenses/by-nc-sa/4.0/</p>	TITLE JEEP GLADIATOR BED RAIL ANGLE	
	PART NUMBER JEEP-BED-RAIL-ANGLE	REV 7.5
	CAD VISIO	DRAWN BY JACOB SHERWOOD
	SCALE 1: 8	SHEET SIZE A - Letter
DO NOT SCALE		SHEET 4 OF 5

4

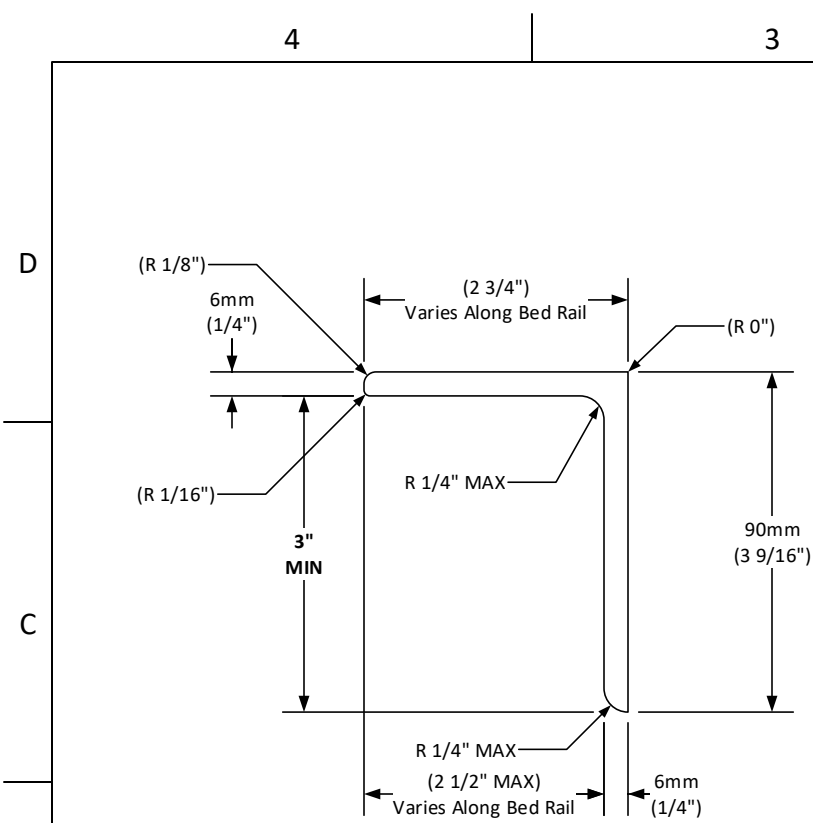
3

2

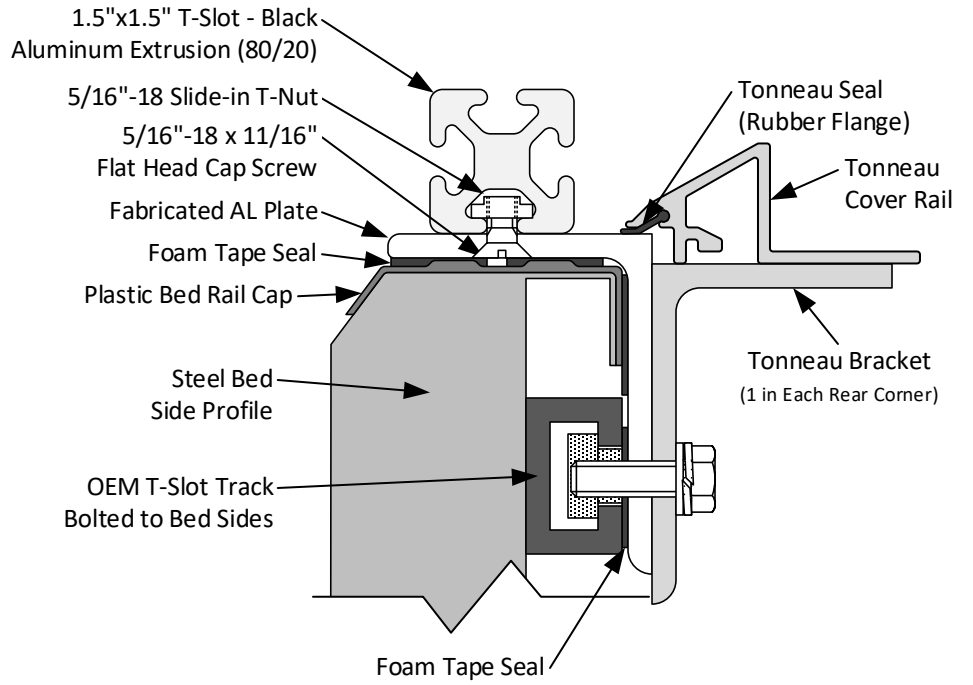
1

A

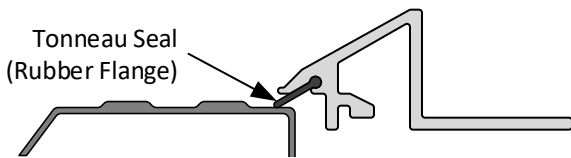
A




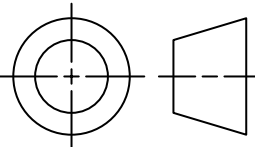
DETAIL A
TYPICAL ANGLE PROFILE



ASSEMBLY SECTION VIEW
TYPICAL CROSS SECTION
THROUGH BED RAIL



TONNEAU DETAIL
How Tonneau Fits Stock Bed Rail

 <p>This work is licensed under a Creative Commons Attribution-NonCommercial-ShareAlike 4.0 International License. creativecommons.org/licenses/by-nc-sa/4.0/</p>		TITLE	
		BED RAIL ANGLE – CROSS SECTION DETAIL	
PART NUMBER		REV	
JEEP-BED-RAIL-ANGLE		7.5	
	CAD	DRAWN BY	SHEET SIZE
	VISIO	JACOB SHERWOOD	A - Letter
SCALE	DO NOT SCALE		SHEET
1: 2			5 OF 5