

2022 Jeep Truck Gladiator V6-3.6L

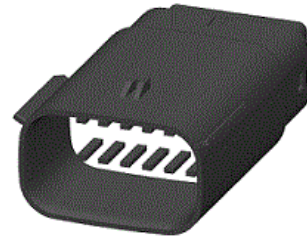
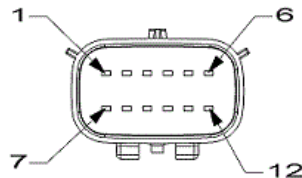
Vehicle &gt; Lighting and Horns &gt; Tail Lamp &gt; Diagrams &gt; Connector Views

## LEFT TAIL LAMP ASSEMBLY

## LAMP-ASSEMBLY TAIL-LEFT

**Harness** Taillamp\_Left**Family:****Cavities:**16**Color:****Gender:**MALE**Part**

33482-6201

**Description:****Connector No:**D6641A**Option:**Standard

Pin	Circuit	Wire Color	Gauge/Size	Function	Option
1	L9	YE/	1.0	LEFT STOP/TURN FEED	EXCEPT EXPORT
1	L52	WH/	1.0	LEFT STOP LAMP DRIVER	EXPORT
2	L145	WH/OG	1.0	LEFT SIDE MARKER CONTROL	EXCEPT EXPORT
2	N0	NA/	0	NO CONNECT	EXPORT
3	N0	NA/	0	NO CONNECT	EXCEPT EXPORT
3	L63	WH/DG	1.0	LEFT REAR TURN LAMP DRIVER	EXPORT
4	L71	WH/GY	1.0	LEFT REAR PARK LAMP DRIVER	
5	L15	WH/BG	1.0	LEFT BACKUP LAMP DRIVER	
6	Z925	BK/GY	0.75	GROUND	EXCEPT EXPORT
6	Z925	BK/GY	1.0	GROUND	EXPORT
7	Z925	BK/GY	0.75	GROUND	
8	L563	WH/GY	0.50	LEFT REAR LIGHTING FAULT SENSE	
9	F923	PK/YE	0.50	RUN RELAY CONTROL	

10	D215	DB/WH	0.50	CAN IHS (+)	
11	D216	WH/	0.50	CAN IHS (-)	
12	P711	GN/	0.50	LEFT BLIND SPOT INDICATOR DRIVER	