

The cables are connected to the rear actuators which contact each brake shoe.

To apply the parking brakes, the hand lever is pulled upward. This pulls the rear park brake shoe actuators, by means of cables.

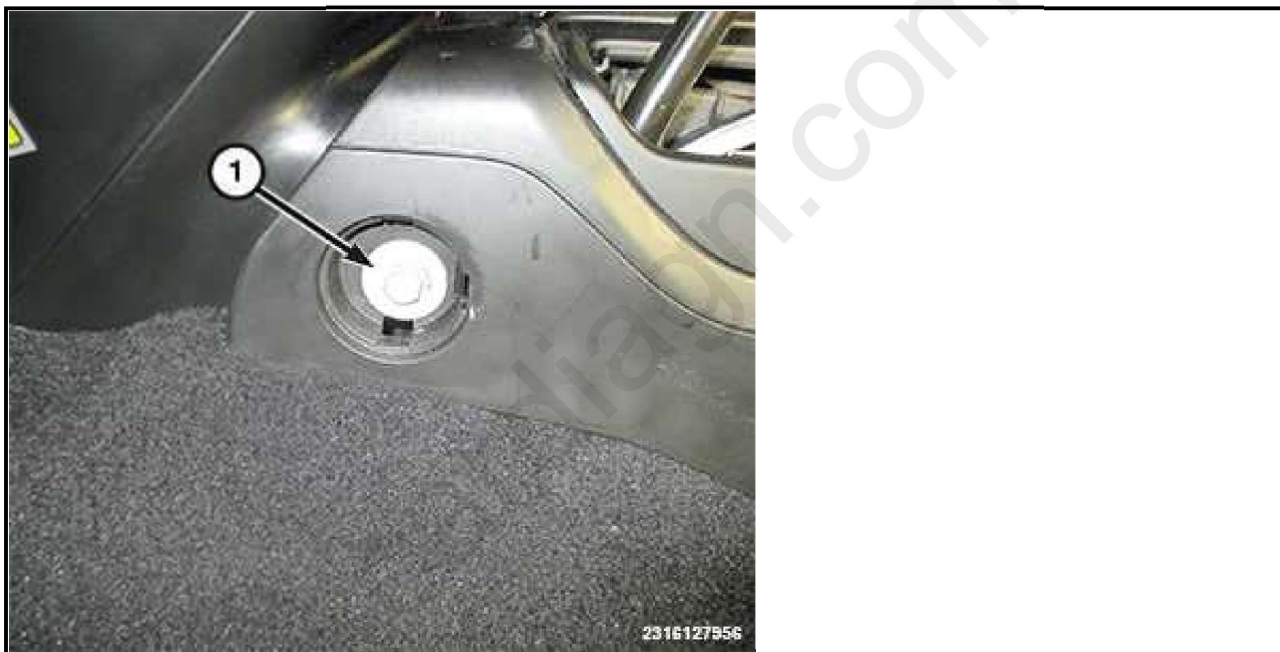
A parking brake switch is mounted on the parking brake lever and is closed by upward movement of the lever. The switch, which is in circuit with the red brake warning light in the dash, will illuminate the red brake warning light whenever the parking brake is applied.

The parking brake system has two adjustments that can be made; cable adjustment and rear parking brake shoe adjustment. A loose cable system is characterized by the park brake lever being loose at the beginning of travel. Under adjustment of the rear parking brake shoes is characterized by excessive park brake lever travel.

The park brake cables are adjusted with a nut at the end of the output rod of the parking brake lever. The initial adjustment is made at the factory, and under normal circumstances, no further adjustment should be necessary. Before adjusting the rear brake shoes, verify the parking brake cables are properly adjusted, or adjust as required.

## **ADJUSTMENTS**

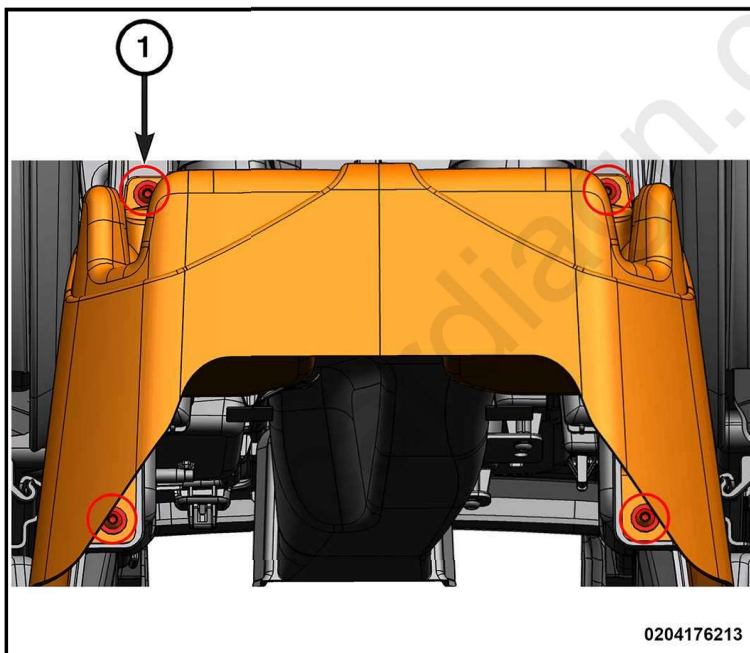
### **PARK BRAKE ADJUSTMENT**



1. Remove the front bolt covers and the bolts (1) on both sides of the console.
2. Move the front seats to the full forward position.

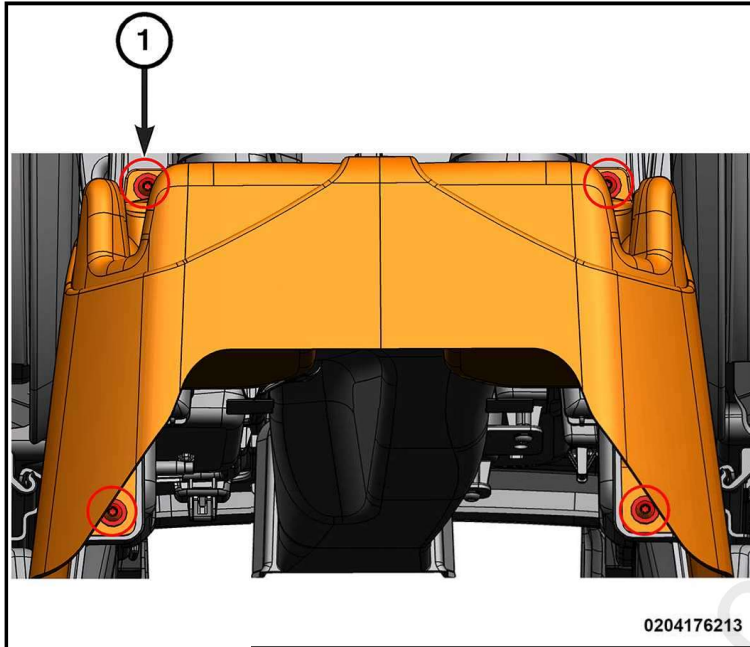


3. Remove the rear bolt covers and the bolts (1) on both sides of the console.
4. Remove the floor console end cap. Refer to [CONSOLE, FLOOR, REMOVAL AND INSTALLATION](#) [CONSOLE, FLOOR, END CAP, REMOVAL AND INSTALLATION](#).



5. Lift the center floor console slightly then remove the cup holder screws (1) and remove the cup holder.
6. Release the parking brake handle and place in the completely lowered position.
7. Turn the adjuster nut counterclockwise (loosening direction) until there is clear slack in the cable system.
8. Pull the parking brake handle gently with virtually no effort in order to evaluate the slack in the cable system. At no time in the adjustment process should you be applying the park brake lever with any significant input or travel, with the exception of Step 6. You are simply looking for looseness or slack at the very beginning of lever travel with essentially zero input force.
9. Turn the adjuster nut in the clockwise direction (tightening) while continuing to wiggle the handle up and down gently to assess the slack in the cable system. Continue turning the nut in the clockwise (tightening) direction, while at the same time wiggling the park bake lever, until slack is perceived to be gone.
10. Apply the parking brake lever at a minimum of 9 clicks and let sit for one minute.

11. Release the parking brake and check for any new slack that may have appeared. Readjust as necessary according to step 5 above.
12. Tighten the adjuster nut an additional one full turn.
13. Pull on the parking brake handle and set the parking brake to ensure it functions properly.
14. Release the parking brake handle and place in the completely lowered position.



15. Position the cup holder to the center floor console then install and tighten the cup holder screws (1).
16. Lower the floor console to the floor.
17. Install the floor console end cap. Refer to [CONSOLE, FLOOR, REMOVAL AND INSTALLATION](#)  
[CONSOLE, FLOOR, END CAP, REMOVAL AND INSTALLATION](#).



18. Install the bolts (1) and tighten securely.
19. Install the rear bolt covers on both sides of the console.
20. Move the front seats to the full rearward position.