

Magnuson Supercharger Small Pulley Supercharger Tune (Currently Automatic Only): **\$300**

Magnuson Supercharger Stock Pulley Tune: **\$250**

Naturally aspirated Tune: **\$200**

Tunes Under Development (Need Testers)

Magnuson Supercharger Manual Small Pulley Tune

Send Request to: davecs1tunes@gmail.com

COPY and PASTE into EMAIL

Customer NAME:

Name of Jeep (Optional but appreciated 😊):

Year of Jeep: 20XX

Model of Jeep: [Wrangler/Gladiator](#)

Trim Level: [Sport/Overland/Mojave/Rubicon](#)

Transmission: [Automatic/Manual](#)

Tire Diameter: [Stock, 33, 35, 37, 40](#)

Final Drive Ratio: [3.73, 4:10, 4:88, 5:13, etc](#)

Instruction for acquiring support will be replied

Instructions for DAVECS1 Tunes

1. These tunes will REQUIRE the use of HP TUNERS MPVI2. It can be found here:

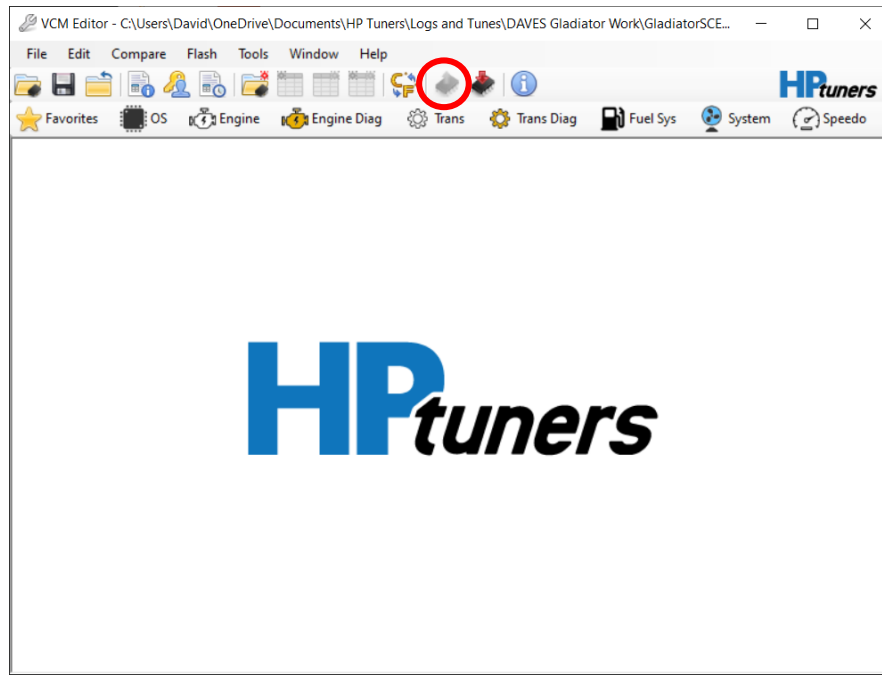
<https://www.hptuners.com/mpvi2plus/>

If you don't have a Tazer, you will need this also:

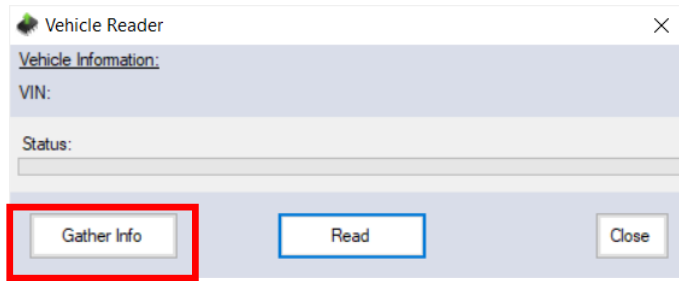
<https://www.hptuners.com/product/dodge-2018-smart-access-cable/>

2. Once you have the MPVI2 you need to download your OEM factory calibration from your Jeep.

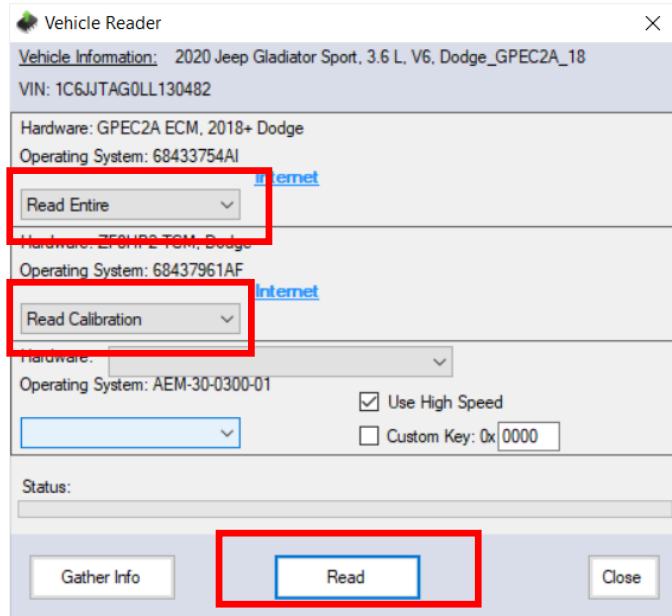
a) Bring up HP Tuners Editor and click the read ICON.



b) You will get this pop up, click “gather info”



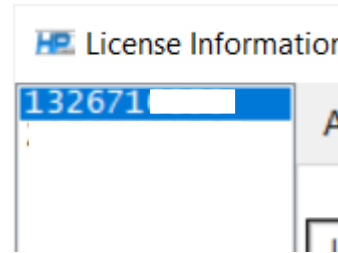
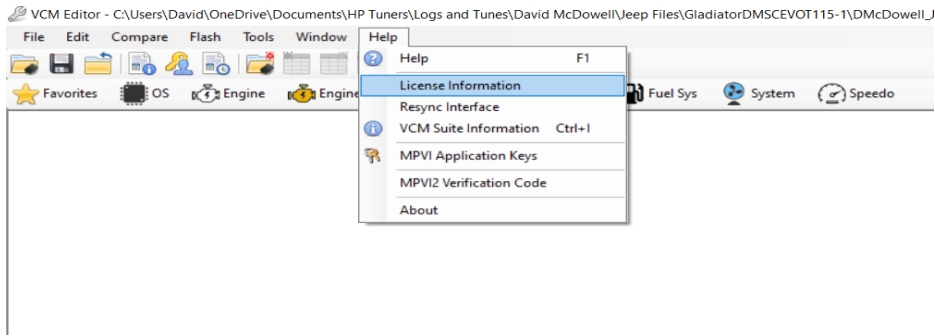
c) You will get this pop up, select “Read Entire” for the GPEC2A ECM and “Read Calibration” ZF8HP2 TCM and click “Read” and follow the prompts.



d) Once the file is read from the jeep it will ask you to save it. I would prefer this file format:

Name_JT/JL_Manual/Automatic_rubicon/Sport/Overland/Mojave

e) I will be tuner locking the built to flash tunes as such I will need you to record your Device ID. Record the Device ID associated with your Interface ID, can be found in the license information under “help” menu



f) Send the file and Tunerlock ID to: davecs1tunes@gmail.com

Flashing the Jeep

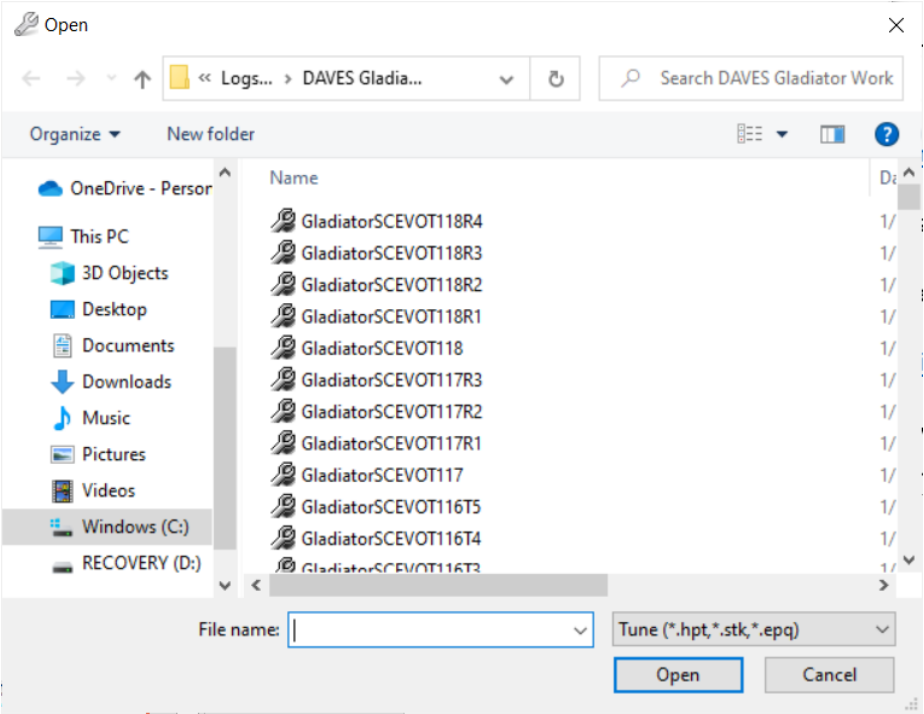
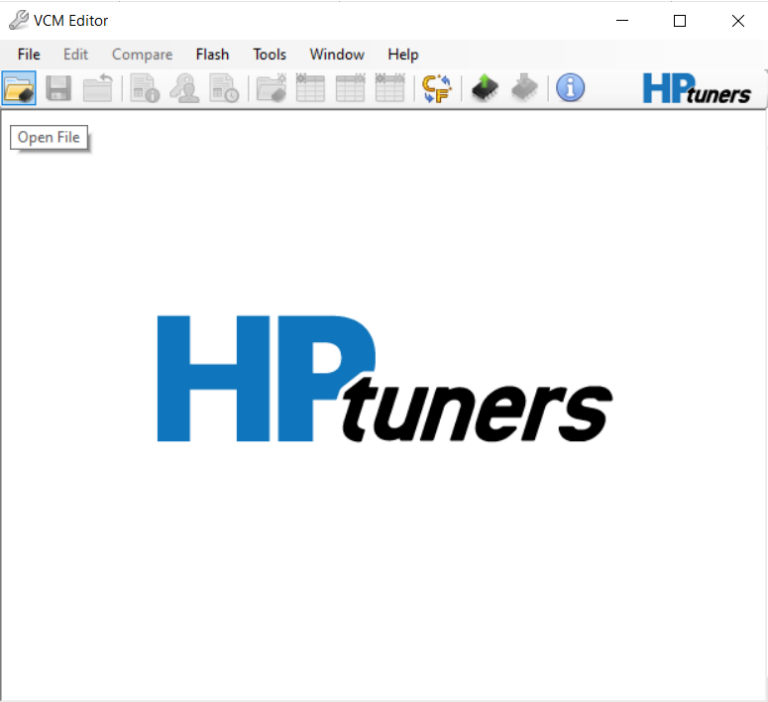
1. In order to flash the tune on to your truck, your engine ECM will need to be unlocked. This service is included in most supercharger packages or you can have it done through HP Tuners

<https://www.hptuners.com/product/pcm-upgrade-service/>

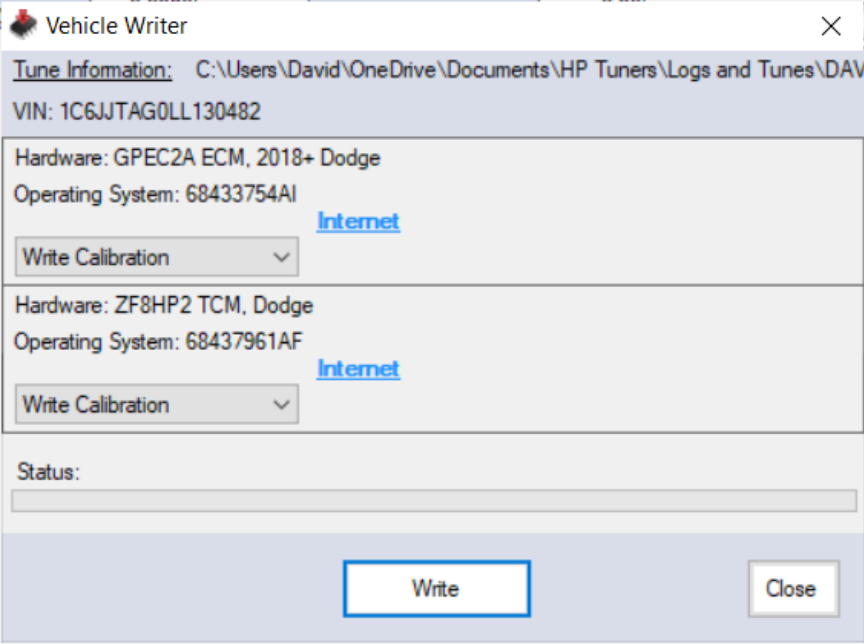
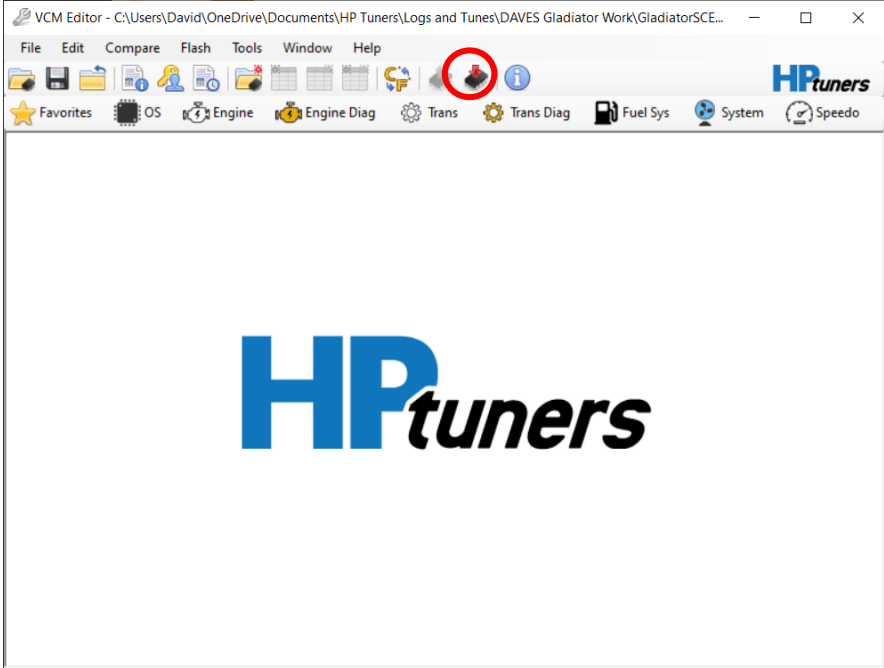
2. To flash the Jeep you will need credits from HP Tuners
Engine will Require 2 Credits
Automatic Transmission will Require 4 Credits

<https://www.hptuners.com/product/universal-credits-2/>

3. I will send back your completed tune via Email. You will need to download it and save it to a location you recognize. Open HP Tuners and go to Open File and find your new tune file

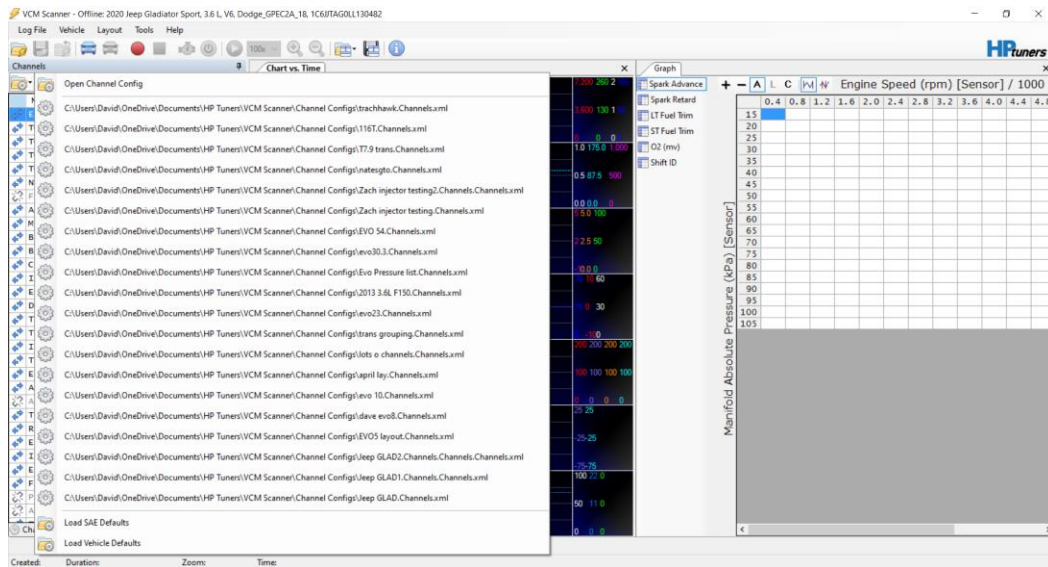


3. Last but not least flash the new file on the Jeep. Click on the “Write File” Icon. That will open the Vehicle writer window. You can hit write and follow the prompts. Note: I like to flash the ECM and TCM one at a time so I will set the one I am flashing to “Write Calibration” and the other to “Do Not Write”



Product Support

1. I would prefer anyone running one of my tunes, to take a datalog of the tune and send it to me. I can then check it over and ensure that everything is doing what I intended and there are no surprises. I will send a Master channel list for data logging when I send your tune. You Open the VCM Scanner that came with your MPVI2 and go to “Open Channel Config” and load it



2. If you have any questions or concerns it would be great if the condition was capture whiled logging these channels. It is not require, but it is really helpful to have fueling information. This Wide Band O2 sensor works really well and is included in my master channel list.

<https://www.hptuners.com/product/aem-x-series-obdii-wideband-afr-controller-gauge/>

DAVECS1 TUNES

