

# XY291A

**⚠** There have been 2 repair incidents on this component. [Learn more](#)

## Connector Details

**Connector No:** XY291A

**Option:** --

**Color:** BLACK

**Part Number:**

**Chassis\_RT:** 80043508A01B

**Dash:** 80043512A01C

**Part Description:** --

**Cavity Count:** 34

### Connector Repair Information

#### Chassis\_RT (Standard)

**Full Repair Kit:** 68305269AA

**Terminal Repair Kits:** N/A

#### Dash (Standard)

**Full Repair Kit:** 68396616AA

**Terminal Repair Kits:** N/A

[FCA Connector Repair Site](#)

### Location Views

### Location View Links

**Chassis\_RT: Standard - 3.0L**

[View 2D](#)

**Chassis\_RT: Standard - 3.6L**

[View 2D](#)

**Dash: Standard - DIESEL**

[View 2D](#)

**Dash: Standard - EXCEPT DIESEL**

[View 2D](#)

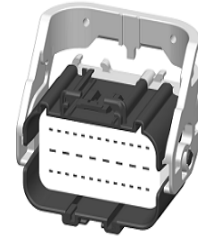
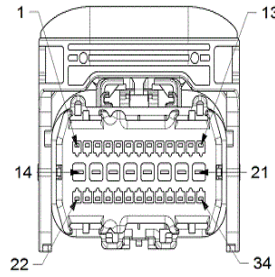
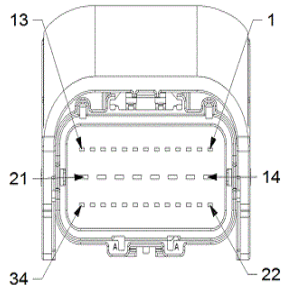
### Connector Views

#### Chassis\_RT

**Mating Side:**

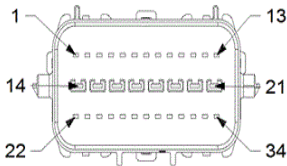
**Wire Insertion Side:**

**Isometric View:**

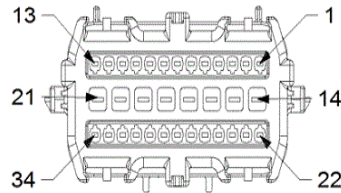


## Dash

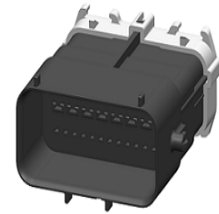
**Mating Side:**



**Wire Insertion Side:**



**Isometric View:**



**NOTE:** When connector cavities are identified as "NO CONNECT" in the following table, there may be "Dummy (blunt cut) wires" or Cavities may be "Open", "Plugged, or "Flashed over" depending on vehicle option content.

Pin	Harness Family	Circuit	Wire Color	Gauge/Size	Function	Option
1	All Variants	F941	PK / WH	0.35	IGNITION RUN/START CONTROL OUTPUT	
2	All Variants	L89	WH / YE	0.75	LEFT FRONT FOG LAMP CONTROL	
3	All Variants	F861	WH / PK	0.35	HEADLAMP LEVELING SNSR 5V SUPPLY	
4	All Variants	L963	WH / DB	0.35	HEADLAMP LEVELING SENSOR REAR SIGNAL	
5	All Variants	L966	WH / BK	0.35	HEADLAMP LEVELING SENSOR FRONT RETURN	
6	All Variants	N0	NA	0	NO CONNECT	
7	All Variants	N7	DB / OG	0.35	FUEL TANK PRESSURE SIGNAL	

8	All Variants	K917	BN / BG	0.35	SENSOR GROUND	
9	All Variants	K859	BN / DB	0.35	5 VOLT SUPPLY	
10	All Variants	B6	DG / WH	0.35	RIGHT FRONT WHEEL SPEED SENSOR (-)	
11	All Variants	B7	DG / VT	0.35	RIGHT FRONT WHEEL SPEED SENSOR (+)	
12	All Variants	B3	DG / YE	0.35	LEFT REAR WHEEL SPEED SENSOR (-)	
13	All Variants	B4	DG / GY	0.35	LEFT REAR WHEEL SPEED SENSOR (+)	
14	Chassis_RT	N1	DB / OG	2.0	FUEL PUMP CONTROL OUTPUT	
	Dash	N1	DB / OG	2.5	FUEL PUMP CONTROL OUTPUT	
15	All Variants	A959	RD	1.5	FUSED B(+)	
16	All Variants	N0	NA	0	NO CONNECT	
17	All Variants	N0	NA	0	NO CONNECT	
18	All Variants	N0	NA	0	NO CONNECT	
19	Chassis_RT	Z906	BK	1.5	GROUND	
	Dash	Z906	BK / YE	1.5	GROUND	
20	Chassis_RT	Z906	BK	1.0	GROUND	
	Dash	Z906	BK / YE	1.5	GROUND	
21	Chassis_RT	Z906	BK	2.0	GROUND	
	Dash	Z906	BK / BU	2.5	GROUND	
22	All Variants	L90	WH / OG	0.75	RIGHT FRONT FOG LAMP CONTROL	
23	Chassis_RT	K89	BN / GN	0.50	O2 1/1 POSITIVE CURRENT CONTROL	3.0L DIESEL
	Chassis_RT	K99	BN / GN	0.75	O2 1/1 HEATER CONTROL	3.6L GAS
	Dash	K89	BN / GN	0.35	O2 1/1 POSITIVE CURRENT CONTROL	3.0L DIESEL
	Dash	K99	BN / GN	0.50	O2 1/1 HEATER CONTROL	3.6L GAS
24	Chassis_RT	K902	BN / DG	0.50	O2 RETURN (UPSTREAM)	3.0L DIESEL
	Chassis_RT	K902	BN / DG	0.75	O2 RETURN (UPSTREAM)	3.6L GAS
	Dash	K902	BN / DG	0.35	O2 RETURN (UPSTREAM)	3.0L DIESEL
	Dash	K902	BN / DG	0.50	O2 RETURN (UPSTREAM)	3.6L GAS
25	Chassis_RT	K41	DB / BU	0.50	O2 1/1 SIGNAL	3.0L DIESEL
	Chassis_RT	K41	DB / BU	0.75	O2 1/1 SIGNAL	3.6L GAS
	Dash	K41	DB / BU	0.35	O2 1/1 SIGNAL	3.0L DIESEL
	Dash	K41	DB / BU	0.50	O2 1/1 SIGNAL	3.6L GAS
26	All Variants	N11	DB / BG	0.35	FPCM PWM CONTROL	
27	All Variants	N12	DB / GN	0.35	FPCM PWM FEEDBACK	
28	Chassis_RT	K108	VT / GY	0.50	ESIM SIGNAL	
	Dash	K108	VT / GY	0.35	ESIM SIGNAL	
29	Chassis_RT	K917	BN / BG	0.50	SENSOR GROUND	
	Dash	K917	BN / BG	0.35	SENSOR GROUND	
30	Chassis_RT	K79	BN / BU	0.50	O2 1/1 HEATER CONTROL	3.0L DIESEL
	Chassis_RT	Z909	BK	0.75	GROUND	3.6L GAS
	Dash	K79	BN / BU	0.75	O2 1/1 HEATER CONTROL	3.0L DIESEL
	Dash	Z909	BK	0.75	GROUND	3.6L GAS

31	All Variants	D303	YE / WH	0.35	CAN C (+)
32	All Variants	D304	YE	0.35	CAN C (-)
33	All Variants	B1	DG / OG	0.35	RIGHT REAR WHEEL SPEED SENSOR (-)
34	All Variants	B2	DG / BU	0.35	RIGHT REAR WHEEL SPEED SENSOR (+)